

# **ESKY<sup>®</sup> LOS 2340HDC**

New ESR version according  
to NADCA #207 for Light Alloys  
die casting applications

## General characteristics

EskyLos<sup>®</sup> 2340 HDC is a high alloyed Chromium-Molybdenum-Vanadium Hot Work Tool steel characterised by a low Silicon content and by special micro-alloying elements.

It's designed for the most demanding high pressure Light Alloys (Al-Mg) die casting dies according to the specification NADCA #207.

EskyLos<sup>®</sup> 2340 HDC is also produced via Electro-Slag Remelting process ESR, with the aim to give special quasi-isostatic properties to the whole volume of the mould.

The above mentioned specification, as one of the most important worldwide reference for die-casting application, with very effective acceptance criteria, focuses on two macro-phases of the mould's manufacturing process.

- The Manufacturing process of the steel block, that needs an annealed steel capability;
- The procedure for the heat treatment of the die, that needs an HT capability.

With particular reference to the first one, NADCA #207 requires the "Annealed steel capability" assessment by samples' location in the core of the block, the most critical one, according to the key quality indicators described in Table 1.

Annealed steel capability indicators are tested and certified according to Lucchini RS' internal technical instruction I.T.MET U003.

Thanks to the optimized chemical analysis (P<0.0015%, S<0.003% and low secondary elements content), together with the Electro Slag Re-melting process, followed by special forging and specifically designed heat treatment procedures, Lucchini RS is able to achieve the above mentioned "Annealed steel capability", guaranteeing an extremely high level of material's quality.

The strong points of this steel are:

- warm rigidity
- warm strength
- high resistance to thermal shock and to heat cracking;
- excellent mechanical properties in the ductile-brittle transitional phases;
- high resistance to tempering;
- excellent machinability in annealed conditions.
- suitable for long run dies
- suitable for production of part requiring smooth surfaces (to be coated or paint)

- not recommendable for dies producing small lots (200-2000 pcs)
- well suited for large dies

EskyLos<sup>®</sup> 2340 HDC is the ideal choice in hot applications where it is necessary to maintain unaltered the mechanical properties of the material in all the phases of the process, including the most critical moments on start-up.

Annealed steel capability indicators are tested and certified according to Lucchini RS' internal technical instruction I.T.MET U003.

For each single block Lucchini RS guarantees a high level of material quality, based on the control of key quality indicators of annealed steel capability summarized by the Table 1.

Table 1: Annealed steel capability

A	Grade	<b>ESKY<sup>®</sup> LOS 2340HDC</b>
B	Annealed Brinell Hardness	≤ 220 HB
C	Chemical Analysis (as Product Analysis)	According to Lucchini RS Standard. Sampling location: <b>1/2 W + 1/2 T</b>
D	Micro Cleanliness	According to ASTM E45 Method A (0,5 field) NADCA #207 Sampling location: <b>1/2 W + 1/2 T</b>
E	UT Quality	UNI EN 10228-3 Class 4
F	Grain Size	No. 7 or finer according to ASTM E112 Sampling location: <b>1/2 W + 1/2 T</b>
G	Annealed Micro structure	NADCA #207 Sampling location: <b>1/2 W + 1/2 T</b>
H	Banding Segregation	NADCA #207 Sampling location: <b>1/2 W + 1/2 T</b>
I	Impact Capability Testing	NADCA #207 Sampling location: <b>1/2 W + 1/2 T</b>
Sketch of sampling location		

EskyLos<sup>®</sup> 2340 HDC is usually supplied as forged block, rough machined, annealed for 220 HB max with the following standard sizes' range: width 600-800-1050 mm x thickness 200-600 mm x length. Upon customer's request bigger dimensions can be assessed and achieved through the special 3D forging process.

NADCA requires the "Heat Treatment process capability" assessment of the die: this is a very effective requirement usually not included in other specifications.

## Chemical analysis

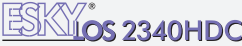
	Range	C [%]	Si [%]	Mn [%]	Cr [%]	Mo [%]	V [%]	S [%]	P [%]
 Alloying [% in weight]	min	0,32	0,10	0,30	4,80	1,20	0,30	-	-
	max	0,40	0,30	0,50	5,50	1,50	0,50	0,003	0,015

Table for comparison of international classification

**W. Nr. 1.2340**

Heat analysis obtained during the pouring of the steel: in accordance with NADCA #207, as show in the table.

Product analysis: in order to consider the possible deviations due to the analytical reproducibility and the heterogeneity of the steel, the range of the chemical composition applicable to product analysis is usually wider than the one applicable to the heat analysis for C and Cr values. This point is regulated by the Table 6 of DIN 17 350.

Lucchini RS's tool steels are designed in order to optimize the material's performances.

The brand name identifies the Lucchini RS product, the number refers to the Werkstoff classification; "HDC" stands for "HIGH DIE CASTING".

## Main applications

EskyLos<sup>®</sup> 2340 HDC lends itself to the following applications:

- High pressure Al-Mg dies for aluminium stamping;
- low pressure Al dies;
- moulds for gravity casting;
- containers for presses;
- matrices for aluminium extrusion;
- heels for extrusion presses;
- jackets for extrusion presses.

## Physical and mechanical properties

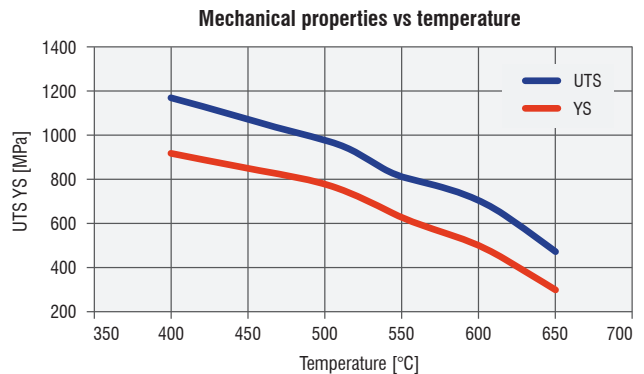
### Main physical properties

ESKY <sup>®</sup> LOS 2340HDC	20°C	400°C	600°C
Modulus of elasticity [GPa] (1GPa=1000 MPa)	210	186	167
Coefficient of thermal expansion from 20 °C at [10 <sup>-6</sup> /K]	-	12,0	12,8
Thermal conductivity [W/mK]	24,7	27,8	29,5

### Main mechanical properties

ESKY <sup>®</sup> LOS 2340HDC	400°C	500°C	600°C
Ultimate Tensile strength (UTS) [MPa]	1.170	970	660
Yield stress (YS) [MPa]	920	760	485

The data are average values taken from a test piece hardened at 980° C, quenched and with a final temper to give a hardness of 44HRc.



## Heat treatments

EskyLos<sup>®</sup> 2340 HDC is supplied in the annealed condition. If a different hardness is required or if heat treatment is needed, we suggest applying the following parameters.

This information is only indicative and must be adapted depending on the different heat treatment facilities employed and on the thickness of the bar: for any question and particular requirement don't hesitate to contact our technical staff of Metallurgy & Laboratories Department.

### Soft annealing

Suggested temperature	850 °C
Temperature increase	Max 50 °C/h
Soaking time	Minimum 120 min from when the temperature settles
Cooling	Slow in the furnace at max 25 °C/h to <b>600 °C</b> , then at room temperature

Soft annealing is recommended where it is necessary to improve the machinability of the tool. After annealing a hardness of max 220 °C is achieved.

**Stress Relieving**

Suggested temperature	650 °C
Temperature increase	Max 100 °C/h
Soaking time	Minimum 120 min from when the temperature settles
Cooling	Slow in the furnace at max 25 °C/h to <b>200°C</b> , then at room temperature.

If the suggested temperature is lower than the tempering temperature, the stress relieving temperature will be 50° C lower than the tempering temperature previously applied

We strongly recommend to perform the stress relieving:

- After rough machining in order to minimize distortions and avoid quenching cracks by hardening treatment;
- After the finish machining, before the very first sampling, to avoid possible damages to cavity surface and sub-surface caused by not optimized hard milling.

**Hardening**

We suggest to carry out hardening on material supplied in the annealed condition and tempering immediately afterwards.

Hardening should be carried out after the material has been pre-heated according to the following table.

First pre-heating temperature	400 °C
Temperature increase	Max 150 °C/h
Soaking time	25 min every 25 mm thickness or when (Ts-Tc) < 90 °C

Second pre-heating temperature	600 °C
Temperature increase	Max 150 °C/h
Soaking time	20 min every 25 mm thickness or when (Ts-Tc) < 90 °C

Third pre-heating temperature	800 °C
Temperature increase	Max 150 °C/h
Soaking time	20 min every 25 mm thickness or when (Ts-Tc) < 90 °C

The first preheat at 400 °C is advisable to eliminate the accumulated stresses caused resultant from mechanical working. The successive preheats at 600°C and 800°C are necessary to homogenise the temperature of the piece. Rate of increase is 150°C per hour.

The soaking time is calculated from the thickness of the piece and will vary with the temperature, as indicated in the table.

Alternatively, the time can be adjusted on the basis of the difference between the Internal temperature (Tc) and the Surface temperature (Ts) of the piece, measured by means of two thermocouples.

After the third pre-heat at 800 °C, the austenitising temperature should be reached as quickly as possible and maintained for 30 min from when (Ts-Tc) < 15 °C or on the basis of the following formula:

$$t = (x + 39) / 2$$

t = soaking time [min]  
x = thickness [mm]

Austenitising temperature	980-1010°
Temperature increase	> 150°C/h
Soaking time	t = (x + 39) / 2 or 30 min from when (Ts-Tc) < 15 °C
Cooling	Air, vacuum cooling, salt bath, polymer in H2O

A controlled quench rate provide optimim metallurgical properties, while minimizing distorsion and risk of cracking. Methods can be different, such as molten salt austenitizing, quenching, vacuum austenitizing and pressurized gas quenching.

Faster quench rates result in increased toughness. The cooling rate is a function of the size of the tool and the quenching power of the equipment used. Directly after quenching, EskyLos<sup>®</sup> 2340 HDC is hard, brittle and highly stressed; it is vulnerable to cracking spontaneously and must be tempered while still warm. Further tempering will reduce the stress level and hardness, but increase toughness and resistance to cracking in service.

The final hardness level chosen depends on the application and is normally in the range of 42-48 HRc. This is achieved by careful control of temperature and time of tempering. A minimum of two tempers is required to give dimensional stability and the correct metallurgical structure.

Hardness is not the only indicator of how a tool will perform, because tool life is more dependent on the metallurgical structure of the steel, before and after heat treatment.

### Tempering

It is recommended to set the temperature of the first temper between 550 and 580 °C, close to the secondary hardness.

The temperature of the second temper must be set on the basis of the required mechanical properties, and must be higher than the temperature applied for the first temper.

The soaking time for the first and the second temper are calculated by applying the following empirical formula:

$$t' = t'' = 0,8 x + 120$$

$t' = t''$  = soaking time [min]  
 $x$  = thickness [mm]

A third temper at a temperature of 30-50 °C below the maximum temperature previously applied will function as a stress relieving cycle.

Tempers at a temperature between 400 and 550 °C are not advisable, as they reduce the material toughness. Tempers at a temperature lower than 200 °C should not be carried out.

The soaking time for the third temper are calculated by applying the following empirical formula:

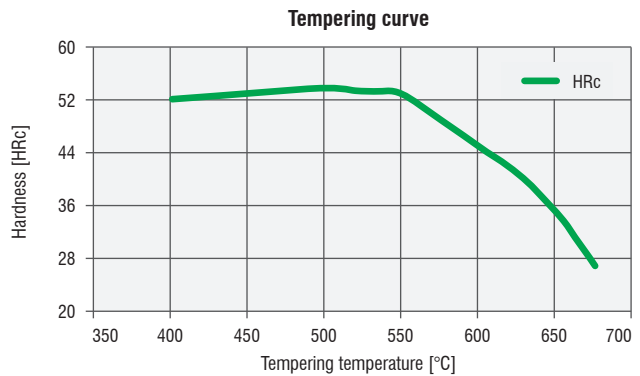
$$t''' = 0,8 x + 180$$

$t'''$  = soaking time [min]  
 $x$  = thickness [mm]

First tempering temperature	550 - 580 °C
Soaking time	$t' = 0,8 x + 120$
Cooling	Room temperature

Second tempering temperature	Set on the basis of the required mechanical properties, in any case higher than the temperature applied for the first temper.
Soaking time	$t'' = 0,8 x + 120$
Cooling	Room temperature

Third tempering temperature	30-50 °C lower than the max temperature previously applied
Soaking time	$t''' = 0,8 x + 180$
Cooling	Slow cooling in the furnace up to 250 °C, then at room temperature



Tempering curve of a sample which has been austenitised at 980 °C. The diagram shows values obtained after the second temper.

### *Variation in dimensions during heat treatment*

During the heat treatment of EskyLos<sup>®</sup> 2340 HDC the phase transformation points are exceeded. Inevitably this causes a variation in the volume of the material. For this reason we recommend leaving enough machining allowance to compensate for the change of dimension due to heat treatment. All the corners should be rounded off.

### *Nitriding*

The purpose of nitriding is to increase the resistance of the material to wear and abrasion. This treatment is very useful for components where high performance is necessary, as it extends the life of the material. We suggest nitriding the component in the hardened and tempered condition. The tempering temperature must be at least 50 °C higher than the nitriding temperature.

Modern nitriding processes allow the original dimensions of the component to be maintained. We recommend heat treating the component in the finish machined condition.

In any case, other properties can be analysed and studied deeper by Lucchini RS on specific Customer request: please consult Lucchini RS specialists of MET Department.

### *Remarks*

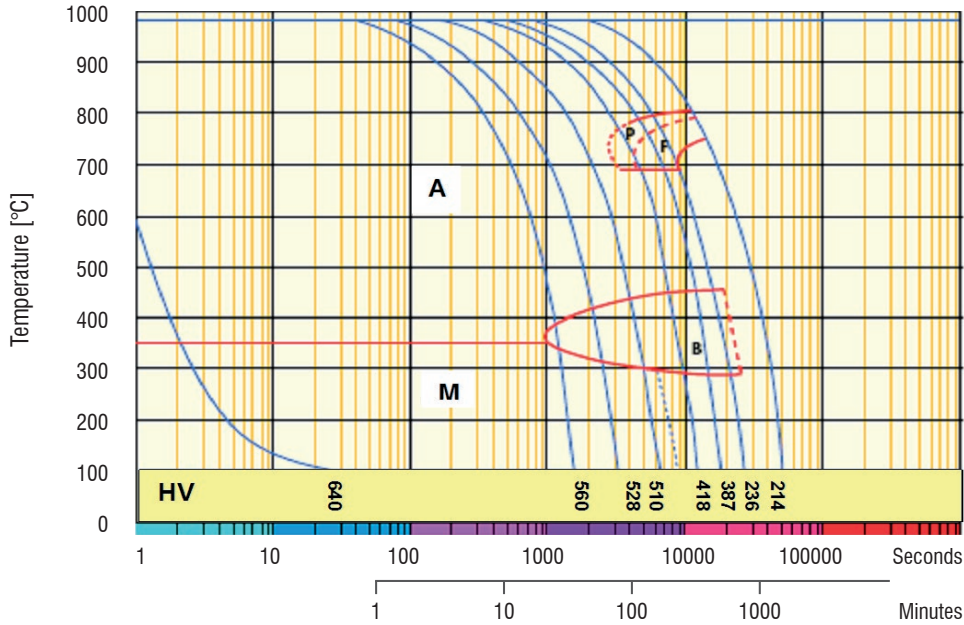
In accordance with its internal technical instruction I.T. MET U002 Lucchini RS has selected highly specialized heat treatment companies, which perform the vacuum hardening complying with Lucchini RS heat treatment procedure I.T.MET – U001.

We strongly recommend to send your dies to one of the heat treatment companies officially approved by Lucchini RS.

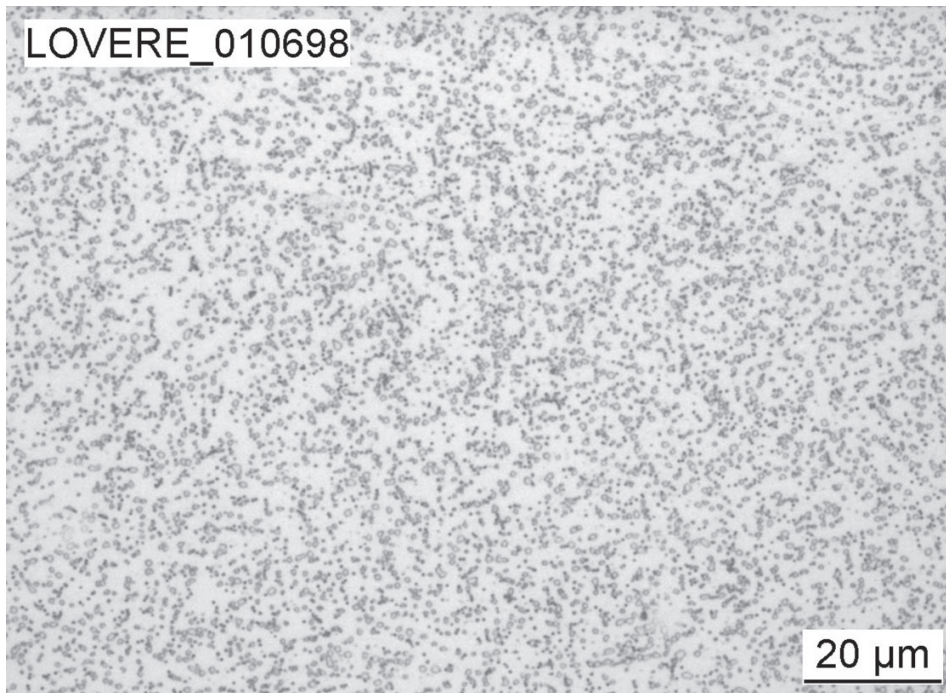
For more information don't hesitate to ask to our local Distributor – Service Center or to our Sales Department. In case of different needs of heat treatment (like salt bath) please contact our technical staff of Metallurgy & Laboratories Department.



## CCT Curve



## Annealed microstructure of EskyLos<sup>®</sup> 2340 HDC



The annealed microstructure of the as received steel consists essentially of a ferritic matrix with a homogeneous distribution of spheroidized carbides, when examined at 500X, after being polished and etched with 4% Nital, free of excessive banding.



## The advantages of the ESR technology

The ESR (Electro-Slag-Melting) manufacturing technology offers the following advantages:

- increase of material toughness;
- high micro-cleanness level;
- total isotropy of the material;
- very low segregation level.

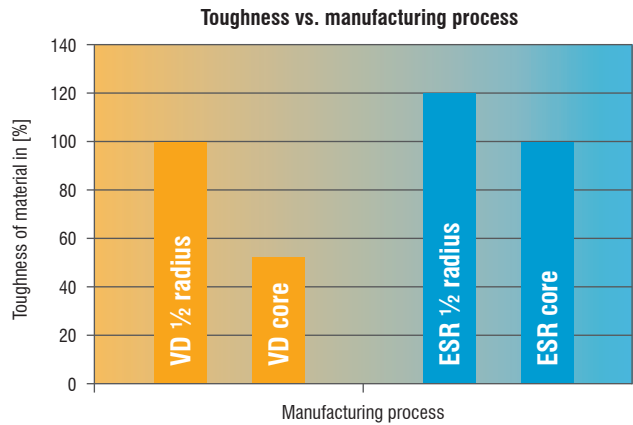
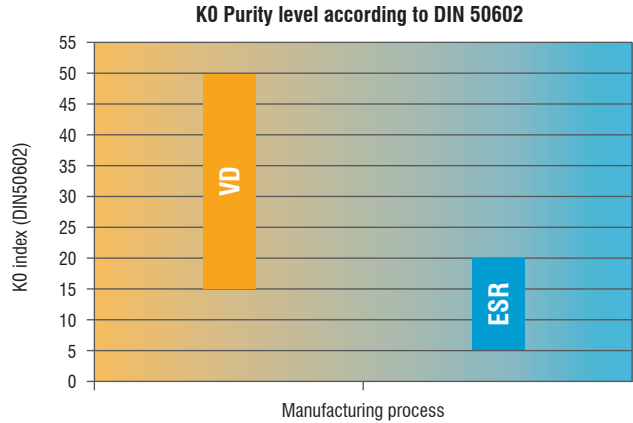
The ESR process is based on ingot remelting, through a traditional VD (vacuum degassing) process, using a particular copper ingot mould that contains basic slag.

The ingot is remelted in a way that the liquid metal passes through the slag, which acts as a filter and retains the inclusions.

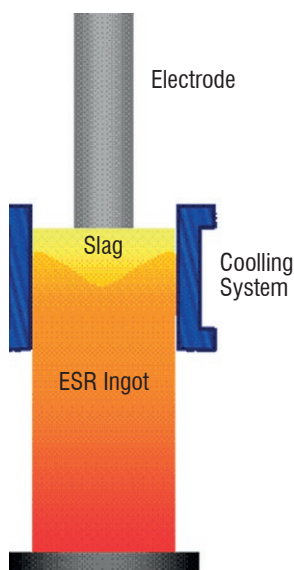
The process of solidification inside the ingot mould is faster than in a traditional process.

The result is homogeneous and isotropic steel.

<b>ESKY<sup>®</sup> LOS 2340</b>	Moulds painted or transparent plastic components for automotive sector. Moulds for cars' trims, cars' head-rear lights, lenses.
<b>ESKY<sup>®</sup> LOS 2340DC</b>	Special version dedicated to high pressure Al & Mg Die-Casting according to SEP1614.96 / VDG M82-1993 specifications.
<b>ESKY<sup>®</sup> LOS 2340HDC</b>	New version designed for the strictest application of high pressure Al & Mg Die-Casting according to NADCA specification #207.



Thanks to the ESR process, EskyLos<sup>®</sup> 2340 HDC satisfies the most difficult requirements in terms of toughness and suitability to polishing. It is suitable for the manufacture of moulds subjected to mirror polishing and to high mechanical stress.



## Guidance for machining

The following parameters are indicative only and must be adapted to the particular application and to the machinery employed. The data refer to material in the annealed condition. Hardness 220 HB max.

### Turning

Type of insert	Rough machining		Finish machining	
	P20-P40 coated	HSS	P10-P20 coated	Cermet
$V_c$ cutting speed [m/min]	170 ÷ 220	(*)	200 ÷ 250	240 ÷ 300
$a_r$ cutting depth [mm]	1 ÷ 5	(*)	< 1	< 0,5

### Milling

Type of insert	Rough machining		
	P25-P35 not coated	P25-P35 coated	HSS
$V_c$ cutting speed [m/min]	160 ÷ 240	180 ÷ 280	(*)
$f_z$ feed [mm]	0,15 ÷ 0,3	0,15 ÷ 0,3	(*)
$a_r$ cutting depth [mm]	2 ÷ 4	2 ÷ 4	(*)

Type of insert	Pre-finishing		
	P10-P20 not coated	P10-P20 coated	HSS
$V_c$ cutting speed [m/min]	180 ÷ 260	200 ÷ 280	(*)
$f_z$ feed [mm]	0,2 ÷ 0,3	0,2 ÷ 0,3	(*)
$a_r$ cutting depth [mm]	1 ÷ 2	1 ÷ 2	(*)

Type of insert	Finishing		
	P10-P20 not coated	P10-P20 coated	Cermet P15
$V_c$ cutting speed [m/min]	200 ÷ 280	220 ÷ 300	240 ÷ 330
$f_z$ feed [mm]	0,05 ÷ 0,2	0,05 ÷ 0,2	0,05 ÷ 0,2
$a_r$ cutting depth [mm]	0,5 ÷ 1	0,5 ÷ 1	0,3 ÷ 0,5

(\*) not advisable

### Drilling

Type of insert	tip with interchangeable inserts	HSS	brazed tip
$V_c$ cutting speed [m/min]	190 ÷ 220	(*)	60 ÷ 80
$f_z$ feed per turn [mm/turn]	0,05 ÷ 0,15	(*)	0,15 ÷ 0,25

(\*) not advisable

### General formulae

Type of machining	Drilling	Milling
n: number of turns of mandrel	$V_c * 1000 / \pi * D_c$	$V_c * 1000 / \pi * D_c$
$V_f$ : feed speed [m/min]	$V_f = f_z * n$	$V_f = f_z * n * z_n$
$f_z$ feed per turn [mm/turn]	-	$f_n = V_f / n$
Note	$D_c$ : Milling cutter or tip diameter [mm] $V_c$ : cutting speed [m/min] $f_z$ : feed [mm]	$f_n$ : feed per turn [mm/turn] $z_n$ : No. of milling cutter inserts

### Approximate equivalent values between hardness and ultimate tensile strength

HB	530	520	512	495	480	471	458	445	430	415	405	390	375
HRc	54	53	52	51,1	50,2	49,1	48,2	47	45,9	44,5	43,6	41,8	40,5
MPa	1.900	1.850	1.800	1.750	1.700	1.650	1.600	1.550	1.500	1.450	1.400	1.350	1.300

HB	360	350	330	320	305	294	284	265	252	238	225	209	195
HRc	38,8	37,6	35,5	34,2	32,4	31	29	27	--	--	--	--	--
MPa	1.250	1.200	1.150	1.100	1.050	1.000	950	900	850	800	750	700	650

## Welding

EsKyLos<sup>®</sup> 2340 HDC can be welded with excellent results if the following procedures are observed. Being a steel of high Carbon Equivalent, it is very susceptible to cracking.

The user is advised to follow carefully the recommendations for preheating and heat treatment after welding

Condition of material	Annealed with hardness 220 HB max	
Welding technique	TIG	MMA
Pre-heating at	330 ÷ 380 °C	
Recommended heat treatment	Heating of the material at 850 °C, cooling in the furnace to 600 °C at a rate of 20 °C/h, cooling at room temperature	
Condition of material	Hardened and tempered	
Welding technique	TIG	MMA
Pre-heating at	330 ÷ 380 °C	
Recommended heat treatment	650 °C or 50 °C lower than the tempering temperature previously applied	

## Electrical Discharge Machining (EDM)

EsKyLos<sup>®</sup> 2340 HDC can be machined by EDM to obtain complex shape.

Afterwards it is advisable to stress relieving the material.

## Chrome Plating

EsKyLos<sup>®</sup> 2340 HDC can be Chrome plated in order to enhance the mechanical characteristics on the surface.

Within 4 hours of Chrome plating, in order to prevent Hydrogen embitterment it is advisable to carry out heat treatment at 200 °C for about 4 hours.

## Photo-engraving

Thanks to modern production processes and to the low Sulphur content, EsKyLos<sup>®</sup> 2340 HDC is suitable for photo-engraving to obtain various patterns.

## Polishing

Due to the ESR Electro-Slag-Remelting manufacturing process, EsKyLos<sup>®</sup> 2340 HDC has excellent suitability to mirror polishing.

## Process and materials selection for product recyclability

According to the potential of steel recycling, Lucchini RS is adopting a strategy for environmental excellence in designing and manufacturing of its tool steel grades, putting eco-effectiveness into practice.

The main adopted steps are:

- conducting an environmental assessment on processes and products, with the minimum use of virgin materials and non-renewable forms of energy;
- moving toward zero-waste manufacturing processes, considering that the ultimate destiny of a scrapped steel mould becomes food for the next steel making process, that is the "waste equals food" philosophy;
- conducting a life cycle assessment for each product and process, minimizing the environmental cost of product and service over its entire life cycles, from creation to disposal, that is the "Cradle to Cradle" philosophy.



**Lucchini RS S.p.a.**

Via Giorgio Paglia, 45  
24065 Lovere (BG) - Italy  
Phone +39 035 963566  
info@lucchinirs.com

**Lucchini Industries S.r.l.**

Via Oberdan, 6/A  
25128 Brescia - Italy  
Phone +39 035 963566  
info@lucchinirs.com

**Lucchini Mamé Forge S.p.a.**

Via delle Cave, 1  
25040 Cividate Camuno (BS) - Italy  
Phone +39 0364 347711  
info@lucchinirs.com

**Lucchini Tool Steel S.r.l.**

Via dei Piazzoli, 1  
24040 Suisio (BG) - Italy  
Phone +39 035 4936611  
info@LucchiniToolSteel.com