

LUCCHINI 2340 ESR

**THE NEW APPROACH IN THE WORLD
OF HOT WORK TOOLS AND
HIGHLY RESISTANT PLASTIC MOULDS
IN ESR QUALITY**

**FORGING
VALUES
IN TOOL
STEELS**

IMPROVEMENT
COURAGE
PEOPLE
PASSION
SPIRIT
GROUP
CUSTOMER
SUCCESS

GROUP
LUCCHINI RS

General characteristics

Lucchini 2340 ESR is a high alloyed Chromium-Molybdenum- Vanadium Hot Work Tool steel characterized by a low Silicon content and by other special micro-alloying elements. Lucchini 2340 ESR has been expressly designed for tools that have to work in a wide temperature range without compromising toughness.

Lucchini 2340 ESR is the ideal choice in hot applications where it is necessary to maintain unaltered the mechanical properties of the material in all the phases of the process, including the most critical moments on start-up. Constant development in hot processing technologies require the use of Lucchini 2340 ESR thanks to its high resistance to thermal fatigue and to high temperature wear.

LUCCHINI 2340 ESR is the result of years of research and experimentation of Lucchini RS in the field of Hot Work Tool steels.

Thanks to the quasi-isotropic properties of ESR quality, LUCCHINI 2340 ESR represents also one of the most important tough options, for highly resistant plastic moulds that need very high pressure strength, excellent resistance to abrasion, also in combination with different surface coatings, and improved toughness in the meantime.

Delivery conditions

LUCCHINI 2340 ESR is supplied in annealed condition in dimensional range up to 500 mm thickness.

The surface hardness value is lower than 220 HB, guaranteeing a good machinability.

Main features

- high resistance to thermal shock and to heat cracking;
- good mechanical characteristics in hot and cold condition;
- excellent mechanical properties in the ductile-brittle transitional phases;
- excellent toughness in hot and cold conditions;
- high resistance to tempering;
- excellent machinability in annealed conditions.

Main application

- dies for aluminium stamping;
- low pressure dies;
- moulds for gravity casting;
- containers for presses;
- matrices for aluminium extrusion;
- heels for extrusion presses;
- jackets for extrusion presses;
- injection moulds;
- special plastic moulds for the automotive industry and optical parts (head lamp components);
- dies and gauges for PVC extrusion.

Chemical analysis

	Range	C [%]	Si [%]	Mn [%]	Cr [%]	Mo [%]	Ni [%]	V [%]
LUCCHINI 2340 ESR Alloying [% in weight]	min	0,32	0,10	0,30	4,80	1,20	-	0,30
	max	0,40	0,30	0,50	5,50	1,50	-	0,50

Comparison with international classifications:

W. Nr. 1.2340

NADCA GRADE E

Heat analysis obtained during the pouring of the steel: in accordance with NADCA #207, as show in the table.

Product analysis: in order to consider the possible deviations due to the analytical reproducibility and the heterogeneity of the steel, the range of the chemical composition applicable to product analysis is usually wider than the one applicable to the heat analysis for C and Cr values.

This point is regulated by the Table 6 of DIN 17 350.

Physical and mechanical properties

Main physical properties

LUCCHINI 2340 ESR	20°C	400°C	600°C
Young modulus E [MPa]	210	186	167
Coefficient of linear thermal expansion α [10 ⁻⁶ /K]	-	12,0	12,8
Thermal conductivity λ [W/mK]	24,7	27,8	29,5

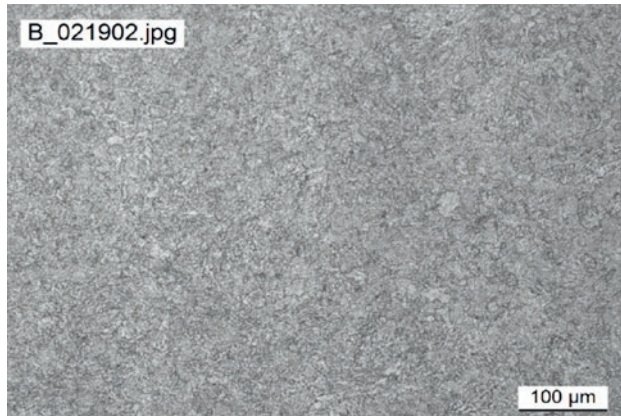
Main mechanical properties

LUCCHINI 2340 ESR	400°C	500°C	600°C
Ultimate tensile strength UTS [MPa]	1170	970	660
Yield strength YS [MPa]	920	760	485

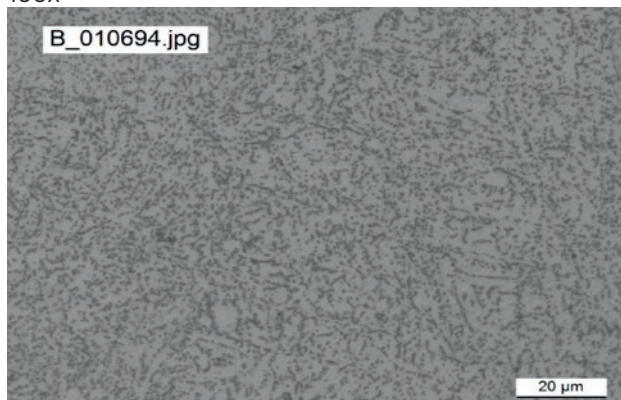
The above mentioned are average values of a sample hardened at 980 °C, quenched and tempered to achieve hardness value of 44 HRC.

Microstructure

The main microstructure of LUCCHINI 2340 ESR consist of a ferritic matrix with a homogeneous distribution of spheroidized carbides.



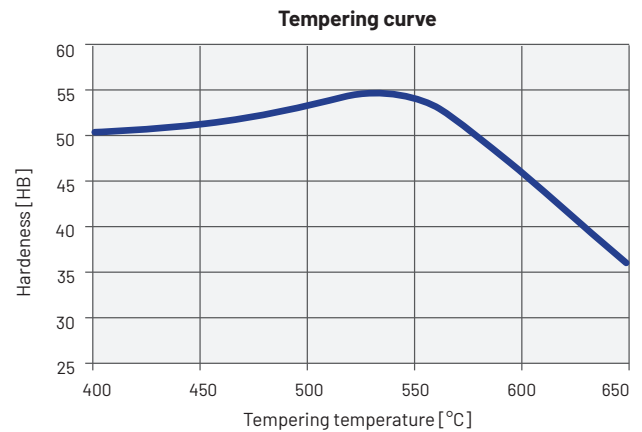
100x



500x

Surface hardness vs tempering temperature

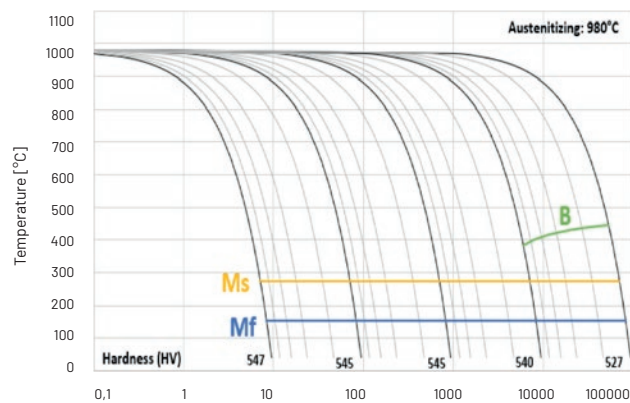
Tempering curve of a sample austenitized at 980°C. The diagram shows values obtained after the second tempering; the first tempering is performed at 550°C.



Heat treatment

Lucchini 2340 ESR is supplied in annealed condition with a hardness value below 220 HB. Heat treatment shall be carried out using the parameters recommended and given below.

Continuous cooling transformation curve (CCT)



Soft annealing

Heating	Max 50°C/h
Suggested temperature	850°C
Soaking time	120 min from the temperature's settlement
Cooling	Slow cooling in furnace (20°C/h)

Soft annealing is useful to improve machinability reducing hardness at 220 HB.

Stress relieving

Heating	Max 100°C/h
Suggested temperature	Annealed condition: 650°C QT condition: 50°C lower than the last tempering
Soaking time	120 min from the temperature's settlement
Cooling	Slow cooling in furnace (20°C/h)

We strongly recommend to perform the stress relieving:

- After rough machining in order to minimize distortions and avoid quenching cracks by hardening treatment;
- After the finish machining, before the very first sampling, to avoid possible damages to cavity surface and sub-surface caused by not optimized hard milling.

Hardening

We suggest to carry out the hardening process on material supplied in the annealed condition and to temper it immediately afterwards.

Hardening should be carried out after the material pre-heating according to the following table.

Heating	Max 150°C/h
First pre-heating temperature	400°C
Soaking time	25 min / 25 mm in thickness or ($T_{SURFACE} - T_{CORE}$) < 90°C

Heating	Max 150°C/h
Second pre-heating temperature	600°C
Soaking time	20 min / 25 mm in thickness or ($T_{SURFACE} - T_{CORE}$) < 90°C

Heating	Max 150°C/h
Third pre-heating temperature	800°C
Soaking time	20 min / 25 mm in thickness or ($T_{SURFACE} - T_{CORE}$) < 90°C

The aim of the first pre-heat at 400 °C is to eliminate stresses caused by machining: if stress relieving is performed earlier, this step could be avoided.

The following pre-heating cycles at 600 °C and 800 °C are necessary to homogenize the temperature of the piece. We recommend an heating rate of 150 °C/h max.

The time of the different stages of pre-heating is calculated on the basis of the thickness of the piece and the temperature, as described in the above attached table.

Alternatively, the time can be adjusted on the basis of the difference between the internal temperature (T_{CORE}) and the Surface temperature ($T_{SURFACE}$) of the piece, measured by two thermocouples.

After the third pre-heating at 800°C, the austenitizing temperature should be reached as quickly as possible and maintained for 30 min from when ($T_{SURFACE} - T_{CORE}$) < 15 °C or on the basis of the following formula:

$$t = (x + 39) / 2$$

t = soaking time [min]
x = thickness [mm]

Heating	Max 150°C/h
temperature	980°C
Soaking time	$t = (x+39)/2$ or 30 min from ($T_{SURFACE} - T_{CORE}$) < 15°C
Cooling	Air, vacuum cooling, salt bath, polymer

Tempering

It is recommended to set the temperature of the first tempering at 550°C, close to the secondary peak hardness.

The temperature of the second tempering must be set according to the required mechanical properties and must be higher than the temperature of the first tempering.

The soaking time for the first and the second tempering are calculated by the following empirical formula:

$$t' = t'' = 0,8 x + 120$$

t' = t'' = soaking time [min]
x = thickness [mm]

A third tempering at 30-50 °C less than the maximum temperature previously used will work as a stress relieving process.

Tempering at a temperature between 400 and 550 °C is not advisable, as it may reduce the material toughness. Tempering at a temperature lower than 200 °C should not be carried out.

The soaking time for the third tempering is calculated by the following empirical formula:

$$t''' = 0,8 x + 120$$

t''' = soaking time [min]
x = thickness [mm]

First tempering temperature	550°C
Soaking time	$t' = 0,8 x + 120$
Cooling	Still air

Second tempering temperature	Based on mechanical properties required
Soaking time	$t'' = 0,8 x + 120$
Cooling	Still air

Third tempering temperature	30-50 °C less than the maximum temperature previously used
Soaking time	$t''' = 0,8 x + 180$
Cooling	Still air

Chrome plating

LUCCHINI 2340 ESR can be Chrome plated in order to enhance the mechanical characteristics on the surface.

In order to prevent Hydrogen embitterment, within 4 hours of Chrome plating it is advisable to carry out heat treatment at 200 °C for about 4 hours.

Nitriding

LUCCHINI 2340 ESR is suitable for ionic and gas nitriding. This treatment is very useful for moulds subjected to extremely stressful applications.

The increase of the surface hardness, following nitriding, extends the component life cycle.

Up-to-date nitriding procedures allow to minimize the dimensional variation of the piece.

Other properties can be deeper analysed against specific Customer request: please contact our Metallurgy Department.

Polishing and photo-engraving

Lucchini 2340 ESR is the suitable material when polishing and photoengraving are needed. Thanks to its integrated manufacturing process, those material manufactured by Lucchini RS are characterized by a high degree of purity.

Polishing for graining: 4 Excellent

Suitability for medium gloss polishing: 4 Excellent

Suitability for mirror polishing: 4 Excellent

Suitability for engraving: 4 Excellent

Rating scale:

4 Excellent – **3 Very good** – **2 Good** – **1 Normal** – **0 Unsuitable**

The advantages of the ESR technology

The ESR (Electro-Slag-Melting) manufacturing technology offers the following advantages:

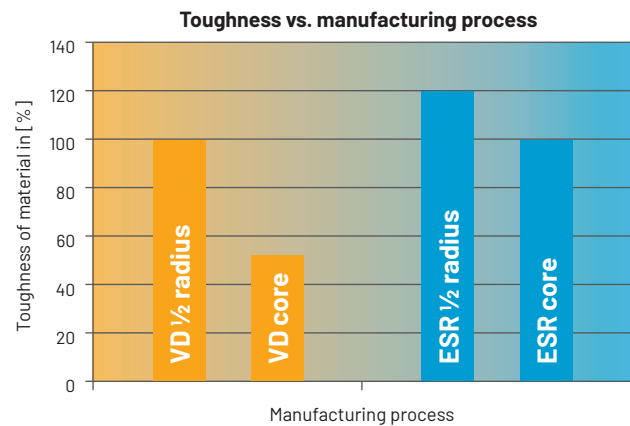
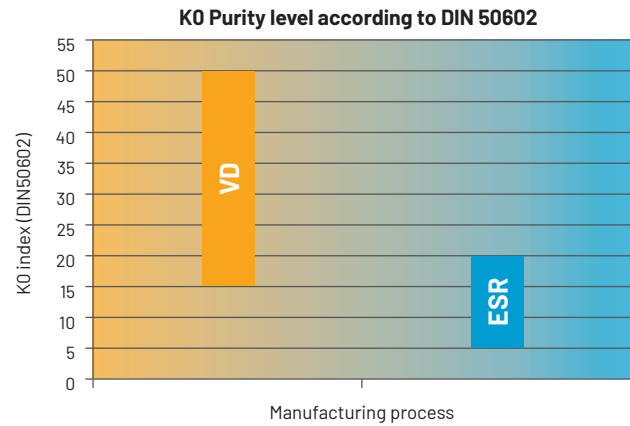
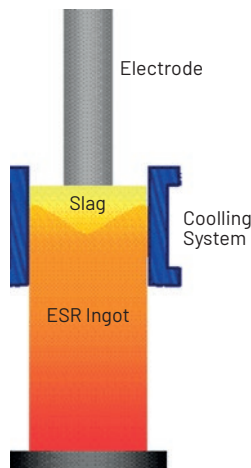
- increase of material toughness;
- high micro-cleanness level;
- total isotropy of the material;
- very low segregation level.

The ESR process is based on ingot remelting, through a traditional VD (vacuum degassing) process, using a particular copper ingot mould that contains basic slag.

The ingot is remelted in a way that the liquid metal passes through the slag, which acts as a filter and retains the inclusions.

The process of solidification inside the ingot mould is faster than in a traditional process.

The result is homogeneous and isotropic steel.



Thanks to the ESR process, LUCCHINI 2340 ESR satisfies the most difficult requirements in terms of toughness and suitability to polishing. It is suitable for the manufacture of moulds subjected to mirror polishing and to high mechanical stress.

Guidance for machining

The following parameters are approximate only and must be adjusted to the specific application and machine tool.

Turning

Type of insert	Rough machining		Finish machining	
	P20-P40 coated	HSS	P10-P20 coated	Cermet
V_c cutting speed [m/min]	150 ÷ 190	(*)	190 ÷ 230	260 ÷ 320
a_r cutting depth [mm]	5	(*)	< 1	< 0,5

Milling

Type of insert	Rough machining		
	P25-P35 not coated	P25-P35 coated	HSS
V_c cutting speed [m/min]	120 ÷ 140	160 ÷ 180	(*)
f_z feed [mm]	0,15 ÷ 0,3	0,15 ÷ 0,3	(*)
a_r cutting depth [mm]	2 ÷ 4	2 ÷ 4	(*)

Type of insert	Pre-finishing		
	P10-P20 not coated	P10-P20 coated	HSS
V_c cutting speed [m/min]	140 ÷ 160	180 ÷ 200	(*)
f_z feed [mm]	0,2 ÷ 0,3	0,2 ÷ 0,3	(*)
a_r cutting depth [mm]	< 2	< 2	(*)

Type of insert	Finishing		
	P10-P20 not coated	P10-P20 coated	Cermet P15
V_c cutting speed [m/min]	200 ÷ 240	250 ÷ 270	300 ÷ 340
f_z feed [mm]	0,05 ÷ 0,2	0,05 ÷ 0,2	0,05 ÷ 0,2
a_r cutting depth [mm]	0,5 ÷ 1	0,5 ÷ 1	0,3 ÷ 0,5

(*) not advisable

Drilling

Type of insert	tip with interchangeable inserts	HSS	brazed tip
V_c cutting speed [m/min]	130 ÷ 160	(*)	90 ÷ 120
f_z feed per turn [mm/turn]	0,05 ÷ 0,15	(*)	0,15 ÷ 0,25

(*) not advisable

General formulae

Type of machining	Drilling	Milling
n: number of turns of mandrel	$V_c * 1000 / \pi * D_c$	$V_c * 1000 / \pi * D_c$
V_f : feed speed [m/min]	$V_f = f_z * n$	$V_f = f_z * n * z_n$
f_z feed per turn [mm/turn]	-	$f_n = V_f / n$
Note	D_c : Milling cutter or tip diameter [mm] V_c : cutting speed [m/min] f_z : feed [mm]	f_n : feed per turn [mm/turn] z_n : No. of milling cutter inserts

Welding

Welding LUCCHINI 2340 ESR can give good results if it is carried out using the recommended procedure.

As steel with high Carbon Equivalent content, LUCCHINI 2340 ESR is very sensitive to cracking.

We recommend to carry out pre-heating and heat treatment after welding.

In order to obtain the best results, we recommend the following procedure:

Material condition	Annealed	
Welding technique	TIG	MMA
Pre-heating at	330 – 380°C	
Recommended Heat treatment	Heating of the material at 850 °C, cooling in the furnace to 600 °C at a rate of 20 °C/h, cooling at room temperature	
Material condition	Hardened and tempered	
Welding technique	TIG	MMA
Pre-heating at	330 – 380°C	
Recommended Heat treatment	650 °C or 50 °C lower than the tempering temperature previously applied	

Electrical Discharge Machining (EDM)

Lucchini 2340 ESR can be machined by EDM to obtain complex shape. Afterwards we advise to carry out the stress relieving procedure.

Process and materials selection for product recyclability

According to the potential of steel recycling, Lucchini RS is adopting a strategy for environmental excellence in designing and manufacturing its tool steel grades, putting eco-effectiveness into practice.

The main adopted steps are:

- to carry out an environmental assessment on processes and products, with the minimum use of virgin materials and non-renewable forms of energy;
- to move toward zero-waste manufacturing processes, considering that the ultimate destination of scrapped steel moulds becomes food for the next steel making process, that is the “waste equals food” philosophy;
- to carry out a life cycle assessment for each product and process, minimizing the environmental cost of product and service over its complete life cycles, from creation to disposal, that is the “Cradle to Cradle” philosophy

Lucchini RS S.p.A. All rights reserved. All contents of this document and all the related industrial and intellectual rights belongs exclusively to Lucchini RS S.p.A. that owns and manages the original version of it. The reproduction, disclosure, dissemination and/or changing of this document, in whole or in part, as well as the utilization of its content and/or the communication there of to third party without express written authorization of Lucchini RS S.p.A. are prohibited.

Via Giorgio Paglia, 45
24065 LOVERE (BG) - Italy
Phone +39 035 963724



www.lucchinirs.com

GROUP
LUCCHINI RS